

SEASON 31
2022 / 2023

THE BROADWAY MUSICAL THAT PUT FOSSE ON THE MAP!

PIPPIN

AUGUST 12, 13, 14, 19, 20, 21

BASED ON THE HIT ANIMATED TELEVISION SHOW

THE SPONGEBOB MUSICAL

OCTOBER 7, 8, 9, 14, 15, 16

BASED ON THE HIT 1991 MOVIE

SISTER ACT

DECEMBER 2, 3, 4, 9, 10, 11

AGATHA CHRISTIE'S

MURDER ON THE NILE

FEBRUARY 3, 4, 5, 10, 11, 12

THE BROADWAY CLASSIC

SHE LOVES ME

APRIL 21, 22, 23, 28, 29, 30

THE CONTEMPORARY MUSICAL THEATRE CLASSIC

GODSPELL

MARCH 10, 11, 12

THE 2010 TONY AWARD WINNER

MEMPHIS

JUNE 9, 10, 11, 16, 17, 18

PLUS, DON'T MISS OUT ON THESE GREAT EVENTS COMING NEXT SEASON:

JAZZ GUITARIST **RONNY SMITH & FRIENDS** | AUGUST 27TH
1950'S ROCK N' ROLL TRIBUTE CONCERT, **THE CRUISERS** | SEPTEMBER 10TH
ROGUE SWAN ENTERS **THE SILVER SCREAM** | OCTOBER 28TH, 29TH, NOVEMBER 4TH & 5TH
THE CECIL COUNTY INDEPENDENT FILM FESTIVAL | NOVEMBER 11TH, 12TH & 13TH
CECIL DANCE THEATRE'S **HOLIDAY ENCHANTMENT** | DECEMBER 17TH & 18TH
ONE DAME CHRISTMAHANUKWAZAKA W/ SCOTT F. MASON | DECEMBER 16TH
THE ELVIS BIRTHDAY BASH | JANUARY 7TH
THE VAGINA MONOLOGUES | FEBRUARY 18TH
THE SUSQUEHANNA BLUEGRASS JAM W/ RHONDA VINCENT & DANNY PAISLEY | MARCH 4TH
THE 2023 CELTIC FESTIVAL | MARCH 18TH
THE CECIL DANCE THEATRE'S **THE LITTLE MERMAID** | MAY 6TH & 7TH

TICKET PRICES INCREASE ON JULY 1ST, 2022 - ORDER YOURS TODAY & SAVE!



MILBURNSTONE.COM

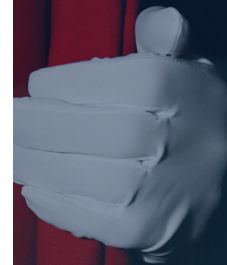
MILBURN STONE THEATRE

CECIL COLLEGE | ONE SEAHAWK DRIVE | NORTH EAST, MD 21901

SEASON 31
2022 / 2023

"WE'VE GOT MAGIC TO DO..."

PIPPIN



MUSIC & LYRICS BY **STEPHEN SCHWARTZ**
BOOK BY **ROGER O. HIRSON & BOB FOSSE**

ORIGINALLY PRODUCED ON THE BROADWAY STAGE BY **STUART OSTROW**
DIRECTED ON THE BROADWAY STAGE BY **BOB FOSSE**
2013 BROADWAY REVIVAL DIRECTED BY **DIANE PAULUS**
ORCHESTRATIONS FOR THE 2013 REVIVAL BY **LARRY HOCHMAN**

DIRECTION AND CHOREOGRAPHY BY **DANE HUTCHINSON**
MUSIC DIRECTION BY **JASMINE LEE**

AUGUST 12, 13, 14, 19, 20, 21



MILBURNSTONE.COM

KNOW

**your performance
will stick with us
forever.**

The arts serve as a source of
inspiration for us all. That's why PNC
is proud to sponsor The Milburn Stone
Theatre.

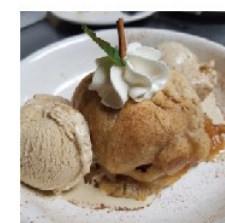
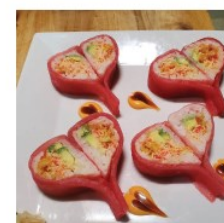
Call Donna Murphy
410-287-9600
donna.murphy@pnc.com



©2019 The PNC Financial Services Group, Inc. All rights reserved. PNC Bank,
National Association, Member FDIC

Anthony Covatta's **STEAK & MAIN** *Steak House | Sushi Bar | Oyster Bar*

Open 7 Days a Week - Serving Lunch, Dinner & Sunday Brunch
Fresh Seafood - Prime Meats - Renowned Cuisine
Outdoor Dining - Extensive Wine Selection - House-made Spices & Sauces



Visit us digitally...

www.steakandmain.com

**\$TEAK
LIFE**

#yougottabeefwithme



Try our Covatta Cellars Wines!

Covatta
CELLARS
Since 1965

107 S. Main St. - North East, MD



TELEVISION



INTERNET



TELEPHONE

ArmstrongOneWire.com • 1.877.277.5711

ARMSTRONG®

Life made **easy.™**

BRAVO!

From the overture to a well deserved standing ovation, EXIT Preferred Realty is proud to support the Milburn Stone Theatre.

Bill Standiford

EXIT Preferred Realty

OFFICE: 410-398-9000 • CELL: 443-553-6726



The Milburn Stone Theatre at Cecil College Presents:

PIPPIN

Book by
Roger O. Hirson

Music & Lyrics by
Stephen Schwartz

Originally produced on the Broadway stage
by **Stuart Ostrow**

Originally directed on the Broadway stage
by **Bob Fosse**

2013 Broadway revival directed
by **Diane Paulus**

Theo Ending Originally Conceived In 1998
by **Mitch Sebastian**

PIPPIN

is presented through special arrangement with Music Theatre International (MTI). All authorized performance materials are also supplied by MTI.

www.mtishows.com



CAST

| | |
|-----------------------|---------------------|
| Leading Player | Rachel Ann Morgan |
| Pippin | Jess Hutchinson |
| Charles | Guy Wellman |
| Lewis | Alex Fintak |
| Fastrada | Adrienne Baranowski |
| Berthe | Maria Glockner |
| Catherine | Danielle Cathcart |
| Theo | Hanna Lyons |

The Players

Lex Archer, Karla Bradley, Emily Boas, Arianna Costantini, Tommy Fisher-Klein,
Julie Millward, Stephanie Millward, Sophie Sapp, Liz Zimmerman

PRODUCTION STAFF

| | |
|---|---|
| Director & Choreographer | Dane Hutchinson |
| Music Director | Jasmine Lee |
| Stage Manager & Asst. Director | Matt Lucatamo |
| Set Designer | William Bryant |
| Lighting Designer | Matt Coyle |
| Costume Designer | Alyssa Millward |
| Properties Master | Baz Wenger |
| Audio Engineer | Jen Scorziello |
| Dance Captain | Stephanie Millward |
| Run Crew | Jordan Henshaw, Sibyl Roosen, Jaime Trautman |

Innovative Thinking & Practical Solutions



PH: 717-397-8282 | <https://www.wickershamconstruction.com> | 777 East Ross Street, Lancaster, PA 17602

CECIL COLLEGE PERFORMING ARTS



Degree and personal enrichment programs for the
young and young at heart.

MUSIC & THEATRE DEGREES • CLASSES • PRIVATE LESSONS



Programs are offered for children and adults.

ENROLL TODAY!

For more information, email: adickenson@cecil.edu

 CecilCollegePerformingArts

arts.cecil.edu



ANNUAL FUND SUPPORTERS

Founders

Mr. George Prettyman, Sr. & Mrs. Milburn Stone

Endowments

Donald H. Palmer Endowed Fund
 Dan, Dee, Katherine, & Grant Newman Fund
 George B. Prettyman Sr. Fund
 Paul O. & Doris G. Shirk Fund
 Milburn Stone Fund,
 Howard & Judith Henry Fund

President's Circle

Jean Anwyll & Miskit Airth⁺

Visionary

Dann Combs & Dane Hutchinson⁺⁺, Janet Fraser⁺⁺

Benefactors

Lee Family Trust^{*}

Balcony Club

Reg & Iris Canaday⁺⁺, Melody Devoe[^], Brandon Gorin⁺⁺, Phil Hansel⁺, Ken & Joan Hutchinson^{*}, Alan & Susan Katz⁺⁺, Ranald & Marie Langille^{*}, Don Macmillian⁺⁺, Carolyn Vandervort[^]

Marquee Club

George & Elizabeth Pfeiffer[^], Deborah Mitchell^{*}

Friends

Nora Kohn^{*}, James Mitchell^{*}, Aliyah Thorpe^{*}, Alesha Walker^{*}

Denotes donations made in:
⁺ 2022 | ^{*} 2021 | [^] 2020

SONG LIST

ACT 1

Scene 1 - Opening

Magic To Do
Corner of the Sky

Leading Player, & Cast
 Pippin

Scene 2 - Home

Scene 3 - Glory

War is a Science
Glory
Glory - Tag
Victory Underscore
Corner of the Sky - Reprise

Charles, Pippin, & The Players
 Leading Player, & The Players
 The Players
 The Players
 Pippin

Scene 4 - Simple Joys

Simple Joys
No Time At All
With You

Leading Player
 Berthe, & The Players
 Pippin

Scene 5 - Revolution

Spread a Little Sunshine
Morning Glow

Fastrada, Lewis, & The Players
 Pippin & Cast

ACT 2

Scene 1 - Politics

Opening Act 2

Full Cast

Scene 2 - Encouragement

The Right Track
There He Was

Leading Player, & Pippin
 Catherine

Scene 3 - Ordinary Life

Kind of Woman
Extraordinary
Prayer for a Duck
Love Song
Corner of the Sky - Last Reprise
I Guess I'll Miss the Man



Catherine
 Pippin
 Pippin, Theo, & Catherine
 Pippin, & Catherine
 Pippin
 Catherine

Scene 4 - The Finale

Finale
Theo's Corner
Bows & Exit

Full Cast
 Theo
 Full Cast


There will be a **15-Minute Intermission** between
 Act 1 & Act 2. Concession Drinks & Snacks may be
 taken into the theatre.

BALLET TAP JAZZ MODERN

March your inner
Dancer
 into one of our classes

HIP HOP BOYS ONLY TODDLER AND MORE!



410-287-3546
cecildancecenter.com

Try A Class For
FREE!

THEATRE BRINGS MAGIC TO THE STAGE.

TRAVEL BRINGS MAGIC TO LIFE.



DREAM IT. PLAN IT. DO IT. REPEAT.

Becky Kotsifas - Co-Owner
 becky@aavacay.com

www.aavacay.com

PRODUCTION BIOGRAPHIES

Sibyl Roosen (Run Crew) is happy to be working spotlight at MST for *Pippin*. She is a Junior in Mechanical Engineering at the University of Delaware and has been involved in theatre for most of her life. Roosen has also been watching MST's shows since she was little, and is excited to volunteer and to work spotlight.

Jaime Trautman (Run Crew) is excited to be working spotlight at MST. Trautman is a junior at Avon Grove High School. She has previously been seen in *The Diary of Anne Frank (Margot)*. She wishes luck to her fellow cast and crew members!

*SMOOTH JAZZ
ON A HOT
SUMMER
NIGHT*

JAZZ GUITARIST
**RONNY
SMITH**
& FRIENDS

MILBURN
STONE
theatre
at CECIL COLLEGE

**SATURDAY
AUGUST 27TH, 2022**

\$22 ADULTS | \$20 SENIORS & MILITARY | \$18 STUDENTS
\$16 CECIL COLLEGE STUDENTS & STAFF | \$14 CHILDREN (UNDER 12)

MSAC Cecil County Arts Council



OLDIES ROCK N' ROLL, JUST THE WAY YOU LIKE IT!

*The Fabulous
Hutcaps*

ONE NIGHT ONLY!
FRIDAY, SEPTEMBER 9TH, 2022
SHOWTIME: 7PM | ALL TICKETS, JUST \$18 | MILBURNSTONE.COM

MSAC Cecil County Arts Council CECIL COLLEGE OWN YOUR FUTURE



DIRECTOR'S NOTE

Magic. We have all been missing a little magic over the past couple years. With all that the world is throwing at us sometimes it is hard to see the magic and beauty that exists all around us. Such has certainly been the case with this production of Pippin with postponements, losses, illnesses, accidents, staff changes -there seemed to be a never-ending supply of hurdles being thrown before us. Through it all, we believed in the magic, we believed that our story deserved to be seen. As director, I shared an image of painting "Delicate Tension" by Kandinsky with the team and that was our jumping point; I saw in the piece a mixture of chaos, beauty, balance, and rebirth. I saw magic. I hope that you enjoy our production as much as we enjoyed creating it for you. It may seem chaotic at times and beautiful at others, but stick with us, leave your fields to flower, and join us.

-Dane Hutchinson

Please note: This production includes the use of
strobe lights, water based haze/fog, adult language,
and adult situations.

MILBURN
STONE
theatre
at CECIL COLLEGE

"WHO LIVES IN A PINEAPPLE UNDER THE SEA?"

nickelodeon
THE
SPONGEBOB MUSICAL

Based on the series by Stephen Hillenburg, Book by Kyle Jarrow
Original songs by Yolanda Adams, Steven Tyler and Joe Perry of Aerosmith, Sara Bareilles, Jonathan Coulton, Alex Ebert of Edward Sharpe & The Magnetic Zeros, The Flaming Lips, Lady A., Cyndi Lauper, John Legend, Panic! at the Disco, Plain White T's, They Might Be Giants, TI and songs by David Bowie, Tom Kenny & Andy Paley.
Additional Lyrics by Johnathan Coulton, Additional music by Tom Kitt

Musical Production conceived by Tina Landau

SPONSORED BY PNC BANK

Starring (in alphabetical order) Cynthia Acevedo, Michael Anderson, Christopher Casadonti, Danielle Cathcart, Arianna Clark, Patrick Collins, Colby Crawford, Cameron Deibler, Kristy Echols, Becky Edwards, Jeremy Edwards, Dale Fleetwood, Elizabeth Hamill, Natalie Hudson, Ethan Kellum, Ryan Milliner, Piper Murray, Hayden O'Brien, Chelsea Pope, Steven Soltow, Silas Taylor & Nate Williams

OCTOBER 7, 8, 9, 14, 15, 16
FRIDAYS AND SATURDAYS AT 8PM, SUNDAYS AT 2PM

MSAC Cecil County Arts Council CECIL COLLEGE

SPONGEBOB IS RECOMMENDED FOR AGES 6+



PRODUCTION BIOGRAPHIES

Lex Archer (Player) is extremely excited to perform at MST for the first time and is grateful to work with such a talented cast and crew! Although this isn't the first time they've been on stage. Some of their favorite roles they played were: *Little Shop of Horrors* (Audrey, DTHS), *You're A Good Man Charlie Brown* (Woodstock/Snoopy, DTHS), and *Hartburn Hotel* (Polly Sincere, DTHS). Currently, they're waiting to be Assistant Director and Choreographer again for Delcastle Technical High School in the Fall. They are hopefully going to be seen in more MST productions in the not-so-distant future!

Adrienne Baranowski (Fastrada) is happy to be back on stage at MST. It's only been 12 years! Previous credits include *Into the Woods* (Rapunzel), *The Addams Family* (Alice Beineke), *Mary Poppins* (Mrs. Banks), *Matilda The Musical* (Ms. Phelps), *Evita* (Eva Peron), along with countless variety shows and cabarets. She is also an accomplished jazz singer. Her next gig after *Pippin* will be Assistant Director for WDL's production of *Sunday in the Park with George* this fall!

Emily Boas (Player) is so excited to be returning to the MST stage for her fourth production with the theater! Her previous credits include *Beauty and the Beast* (Silly Girl), *The Wizard of Oz*, and *Chicago* (June). As a competitive figure skater since age 11, Emily has always been passionate about performing and is eager to continue her journey on the stage! She would like to thank her friends and family for always showing up for her, and a special thank you to everyone in the audience. In these uncertain times, it is a joy to be able to gather together today. Thank you for making this show possible! Enjoy!

Karla Bradley (Player) is excited to make her MST debut! She has played several roles in the last few years; favorites include *Anything Goes* (Angel, Players Club of Swarthmore), *How to Succeed* (Heidi La Rue, Possum Point Players), and *Beauty and the Beast* (Napkin, The Brandywiners Ltd.). She is grateful for the support from her family, friends, and dance family. She is especially grateful for the constant support and encouragement from her husband, Greg. Thanks very much and enjoy the show!

Danielle Cathcart (Catherine) is thrilled beyond words to be making her MST debut in one of her favorite shows of all time. Some of her favorite past roles include *Come Back to the Five & Dime*, *Jimmy Dean* (Mona Then), *Heathers: The Musical* (Young Republicanette/Veronica's Mom), and *1984* (Julia). She would like to thank Dane for casting and encouraging her, Jasmine for helping her through her harmonies, and Matt for running a tight ship while also constantly cracking her up. Additionally, she thanks this fabulous cast for making these past months filled with music and laughter. All her love to her family and friends and enjoy the magic and merriment! She dedicates this performance to her late mother-in-law, Diane Cathcart, who was always making life a treat.

Arianna Costantini (Player) is excited to be in her second production at MST! Her previous show at MST was *Daddy Long Legs* (Jerusha Abbott). She has a degree in Theatre Arts and Film from Towson University. When she is not performing in a musical, she is most likely dancing, directing, or hanging out with dogs.

Milburn Stone Theatre would like to give Special Thanks to:

Our Loyal Patrons
Milburn Stone Theatre Volunteers
Dr. Mary Way Bolt & Chris Ann Szep
Friends and Family of the Cast and Crew

Alesha Walker, The Cecil College Foundation,
The Cecil College Public Safety Team, Linda Kowalski,
Facilities & Housekeeping Staff, PNC Bank,
Tony Covatta, Steak & Main,
Armstrong Cable, Ryan Sexton

A Special Thank You to Marianne Pastelak for her initial work as
Music Director when we started this process in 2021



SONETTA

Community Market





**Wanna see something cool?
Come visit us!**

- 🍷 Polish Pottery 🌍 Fairtrade ♻️ Upcycled
- 🌿 Garden Items 🧤 Handmade 🎨 Metal Art
- 🐾 Pet Accessories 🏠 Home Goods
- ✝️ Faith-Based Items 🔧 New & Used Tools
- 🕒 Vintage 🗿 Stone Sculptures 🚧 Signs
- 🍺 Breweriana 🎱 Eclectic Finds
- 🇺🇸 Military Memorabilia

and other cool things!

www.sonetta.net

Please visit our website for current hours!

Follow us on facebook for updates!

info@sonetta.net 410-658-6400

**2084 Jacob Tome Memorial Hwy.,
Port Deposit, MD 21904**



To heat, or
not to heat,
that is the
question:



WHEN IT COMES TO HOME COMFORT HILLSIDE ALWAYS HAS THE ANSWER

No drama. Just great service.

Hillside Oil Heating & Cooling is proud to be an award-winning full-service heating oil delivery, HVAC, and commercial fuel company successfully servicing our communities and costumers for almost 70 years.



OIL DELIVERY



HEATING



AIR CONDITIONING



SERVICE PLANS



COMMERCIAL FUELS



PRODUCTION BIOGRAPHIES

Alex Fintak (Lewis) is returning to the MST stage for the first time since 2020's production of Chicago. He keeps busy as a member of Rogue Swan vaudeville in Havre de grace MD. He can be seen this October as Nosferatu in *Rogue Swan Enters the Silver Screem*. He would like to thank his very kind and beautiful girlfriend, Marion, for writing this bio and being the love of his life.

Tommy Fisher-Klein (Player) is happy to be a part of the wonderful cast of *Pippin* at MST. Although this is not his debut on at MST this is his debut on stage at MST. Tommy has worked on stage or behind the scenes for many shows and some of his favorites include: *The Color Purple* (Ensemble, WDL), *Avenue Q* (Gary Coleman, WDL), *Gypsy* (Director/Choreographer, WDL), *Hair* (Ensemble, CTC), *Xanadu* (Muse, CTC), and many, many more. Tommy would like to thank his hubby John for all his love and support and the wonderful, talented, supportive cast of *Pippin*.

Maria Glockner (Berthe) is thrilled to be returning to the MST stage in this unbelievably beautiful production of *Pippin* (I hope you brought tissues). Maria thanks: 1) Dane Hutchinson and Andrew Mitchell for the opportunity, 2) Her cast mates who inspire her to be better and 3) Her support network of family and friends whose love and encouragement make this all possible. Maria's other stage experiences include *Midsummer Night's Dream* (Titania, Hippolyta), *Young Frankenstein* (Frau Blucher), *The Mystery of Edwin Drood* (Princess Puffer), *Puffs* (Narrator, no public performances due to cancellation) *Curious Incident of the Dog in the Nighttime* (Mrs. Shears), *Gentlemen Prefer Blondes* (Ella Spofford), *Wizard of Oz* (Auntie Em, Nikko).

Dane A. Hutchinson (Director & Choreographer) would like to thank the cast, crew, and production team for their hard work, dedication, time, and talent. Directing credits include *Curious Incident of the Dog in the Nighttime*, *12 Angry Jurors*, *Disney's Mulan Jr*, *Rocky Horror Show*, *It's A Wonderful Life*, *Much Ado About Nothing*, *Bugsy Malone*, *Steel Magnolias*, and *Doubt*. Choreography credits include *Nunsense II*, *Charles Dickens' A Christmas Carol*, *Oklahoma*, *Rocky Horror Show*, *Little Shop of Horrors*, *Disney's Mulan Jr*, and *Forever Plaid*. Costume Design credits include *Hairspray*, *Hello Dolly*, *Damn Yankees*, *Inherit the Wind*, *Steel Magnolias*, *Nude With Violin*, *It's A Wonderful Life*, *Once Upon a Mattress*, *Godspell* (Vaudevillian production) and *Rocky Horror Show*. Dane has also worked as a scenic artist and stage manager for several local theaters. He wishes to thank Dann for his support and for the grand and miraculous journey thus far.

Jess Hutchinson (Pippin) Is psyched to be returning to the stage after a three year musical theatre hiatus. He has been seen previously in *Tuck Everlasting* (Hugo) with Scottfield Theatre Company as well as a physical comedian and vocalist with Rogue Swans vaudeville cabaret. He currently works as a warehouse lead for Pepsi in Havre de Grace. When not working or performing, he is often trail running, lifting, or watching "Avatar the Last Airbender." He would like to thank his family and friends for all of their support in his return to theatre, and the cast and crew for creating such an amazing experience.



HillsideHVAC.com 302.738.4144 (DE & PA) 410-398-2146 (MD)

PRODUCTION BIOGRAPHIES

Jasmine Lee (Music Director) graduated from the University of Delaware in 2019 with a bachelor's in music education and theater studies minor and currently teaches 4th-12th Grade String Orchestra at Newark Charter Schools. As an undergraduate student, Ms. Lee worked on numerous shows in several capacities such as lighting designer, assistant lighting designer, pit director, orchestrator, and pit musician. She has also performed as a pit musician for local productions such as *Mary Poppins* (2018) and *Les Misérables* (2019, Avon Grove High School), *The Last Five Years* (2019, Wilmington Drama League), and *Little Women* (2019, University of Delaware Opera Theater). Ms. Lee has had the pleasure to present the show *Dogfight* twice, once as an undergraduate student as Lighting Designer, and once with New Light Theater Company as the Sound Board Operator. In the past, Ms. Lee has worked with the University of Delaware Master Players Concert Series as the Manager of Outreach Programs but was unfortunately laid off due to COVID in July 2020. Outside of school and theater, Ms. Lee runs a private studio for strings and piano and strives to be a studio musician.

Matt Lucatamo (Stage Manager & Asst. Director) is delighted to be back at MST. His past stage-managing credits include *American Psycho*, *Chicago*, and *Daddy Long Legs*. Some of his favorite stage credits include *25th Annual Putnum County Spelling Bee* (Chip Tolentino), *Falsettos* (Marvin), and *Spring Awakening* (George), while his directing credits include *9 to 5: The Musical* and *A Funny Thing Happened on the Way to the Forum*. Matt would like to thank Dane, Jasmine, and the entire cast for showing what dedication and perseverance looks like. This production has been over a year in the making, and many, MANY things have stood in its path, but he could not be more proud of the final result. Thank you all and enjoy the show!

Hanna Lyons (Theo) is thrilled to be making her debut on the MST stage with such a talented and dedicated cast and crew! She has performed in different teen shows in the past few years, including *Little Shop Of Horrors* (Ronette), *RENT* (Steve, Ensemble), *Chicago* (Ensemble), *Les Misérables* (Babet/Revolutionary), and *The Nutcracker* (Party Boy/Soldier). She is starting at Harford Community College in the fall with a major in Theater, with plans to transfer to a four year. She would like to thank her family for their endless support, and MST for this wonderful opportunity and experience! Thank you and enjoy the show!

Julie Millward (Player) is excited to return to the MST stage! Julie is currently a Vocal Performance and Music Education major at Towson University. Some of her favorite roles include *A Midsummer's Night Dream: Opera* (Peaseblossom), *Titanic* (Kate Mullins), and *Shrek Jr.* (Princess Fiona). When Julie is not on stage, she enjoys working as a performer for Sew Classy Princess Parties. She hopes you enjoy the show!

Stephanie Millward (Player & Dance Captain) is thrilled to welcome you back to her third MST production. Stephanie would like to thank her friends and family for always supporting her. She hopes you enjoy the show!

SISTER ACT AUDITIONS!

Music by **Alan Menken**, Lyrics by **Glenn Slater** | Book by **Cheri Steinkellner & Bill Steinkellner**
Additional Book Material by **Douglas Carter Beane** | Based on the Touchstone Pictures Motion Picture, *Sister Act*, written by **Joseph Howard**.

DIRECTOR: **ALLIYAH THORPE** | MUSIC DIRECTOR: **MARIA PARKS** | CHOREOGRAPHER: **KRISTIN RIGSBY** | STAGE MANAGER: **KAREN DECKER**

AUDITION DATES:
MONDAY, AUGUST 22ND @ 7PM (MUSIC)
& **SUNDAY, AUGUST 28TH @ 6PM** (MUSIC)

CALLBACKS:
WEDNESDAY, AUGUST 31ST @ 6PM (DANCE CALL)
WEDNESDAY, AUGUST 31ST @ 7PM (VOCAL & ACTING CALLBACKS)

TECH DATES: **NOVEMBER 20, 21, 22, 28, 29, 30 & DECEMBER 1**
PERFORMANCE DATES: **DECEMBER 2, 3, 4, 9, 10, 11**
SEEKING A CAST OF 20 - 26 FOR THIS HIGH ENERGY AND DYNAMIC MUSICAL

For more information and a complete casting breakdown, please visit:

milburnstone.com/auditions



CRAB CRAWL

Saturday, September 10
from 11 AM - 4:30 PM



**SERVING DELICIOUS SMALL CRAB
PLATES FROM LOCAL RESTAURANTS!**

Participating Restaurants:

Cecil County Memorial VFW Post 6027;
Forge Restaurant; Pier One; Bella Pizza;
Coast to Coast, LLC (Food Truck);
Snatcher's Creekside



Tickets \$50
Scan to
purchase



PRODUCTION BIOGRAPHIES

Rachel Ann Morgan (Leading Player) is excited to be returning to the MST stage for the first time in seven years! She has previously been seen - and heard - on the MST stage in *The Addams Family* (Ancestor) and *Little Shop of Horrors* (Audrey II: The Plant). Other favorite shows include *Shrek* (Princess Fiona), *9 to 5* (Doralee Rhodes), and *The Producers* (Ulla). She is stepping back into the Musical Theatre world after taking a six-year hiatus to focus on her music career and tour the United States with DC-based funk band: *The Ron Holloway Band*; as well as play the Baltimore & DC club circuit with her own blues/rock band: *The Rachel Ann Morgan Band*. Upcoming tour and band dates can be found at www.rachelannmorgan.net.

Sophie Sapp (Player) is very excited to be in *Pippin* for her first MST show. Sophie has enjoyed acting in other shows outside of MST like *Suessical* (Bird Girl), *Once Upon a Mattress* (A Lady in Waiting), *Clue* (Singing Telegram Girl), and her favorite role in *Into the Woods* (Jack's Mother). When she is not acting or singing, she is creating delicious coffee drinks at Starbucks and taking naps with her dogs. She has "Magic To Do" now, enjoy the show!

Jen Scorziello (Audio Engineer) is excited to be back at MST. She has enjoyed working such a diverse group of shows including *Annie*, *American Psycho*, *Gentleman's Guide to Love and Murder* and Shakespeare's *Romeo and Juliet*. It is amazing to have theatre take us on another journey once again!

Guy Wellman (Charles the Great) is excited to be back on stage at MST in his first musical with the very talented cast, director, and crew. His stage roles include *Peter and the Starcatcher* (Slank/Fighting Prawn), *12 Angry Jurors* (Juror #7), *Romeo & Juliet* (Prince Escalus), *Restoration* (the bartender), *Duet* (Dan), *Diaspora, TX* (Jesus Hinojosa), and *One Flew Over the Cuckoo's Nest* (Chief Bromden). TV roles include *Hawaii Five-O*, *FBI*, and the mini-series *The American West*. Guy would like to thank his friends and family who continue to support him on his acting journey and most importantly, his wife for her Aloha since 1992.

Baz Wenger (Properties) is excited to be doing Properties and Stage Carpentry with MST. He joins MST after graduating with his MFA in Technical Theater from Ohio University in Athens, Ohio. Previously, he spent a decade in the San Francisco Bay Area working for Berkeley Repertory Theatre, California Shakespeare Theater, and California State University: East Bay. He enjoys balancing his time between Technical Direction/Carpentry and Properties Design/Artistry. Originally from Kent, Ohio, he spends his free time playing French Horn, going camping, and playing computer games.

Liz Zimmerman (Player) is thrilled to return to the MST stage after a decade hiatus...again! She spent many of her teenage years behind the scenes at MST with on-stage appearances in *Oliver!* (Orphan) and *West Side Story* (Anybodys) but took an extended break from theater for college and life in Utah. She returned to the MST stage in 2009 for *Oliver!* (Widow Corney) and *The Wizard of Oz* (Tree/Ensemble), followed by another long break before joining this fantastic *Pippin* cast! She would like to thank her family for their love and support.

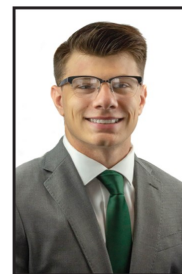
EDWARD JONES SUPPORTS THE ARTS



Investing in and supporting our community.



Jason Y. Lim
Financial Advisor



Tyler J. Simonds
Financial Advisor

410-398-4214
221 E. Main St.
Elkton, MD 21921
edwardjones.com
Member SIPC

Edward Jones
MAKING SENSE OF INVESTING

MILBURN STONE THEATRE

College Administration

Dr. Mary Way Bolt, President
Sherry Hartman, Executive Assistant to the President
Alesha Walker, Executive Assistant

Milburn Stone Theatre Staff

Dann Combs, Director
Andrew Mitchell, Artistic Director
Brandon Gorin, Assistant Technical Director
Baz Wenger, Theatre Carpenter
Wyatt Thompson, Production Coordinator

Production Assistants
Asher Archer-DePace & Jordan Henshaw

Theatre Assistants
Karen Decker, Elizabeth Hamill, Nicole Hawks,
Devon Johnson, Cayla Kerr, Deanna Marino,
Ibukun-Oluwa Ope, & Mattie Yoncha

Milburn Stone Theatre Box Office

One Seahawk Drive
North East, Maryland 21901
(410) 287-1037
boxoffice@cecil.edu

HOURS

Tuesday & Thursday 10:00am - 2:00pm

Wednesday & Friday 12:00pm - 4:00pm

The Box Office Opens Three (3) Hours prior to show time.

www.milburnstone.org

THEATRE ETIQUETTE

- Please silence all watch alarms, cellular phones, and electronic devices.
- To ensure safety of the performers and other patrons the use of cameras and recording devices during performances is prohibited.
- Late seating is not guaranteed and is at the discretion of the House Manager.
- In consideration of other patrons, please moderate the use of fragrances.
- Smoking is not permitted. Cecil College is a smoke free campus.
- No babes in arms.

Emergency Calls

In the event of an emergency, patrons may be reached by contacting the Box Office at (410) 287-1037.

Concessions

Proceeds from the sale of all concessions, including beverages, candy and snacks, benefit the Milburn Stone Theatre.

Group Sales

To purchase discounted tickets for groups of ten or more, call the Box Office at (410) 287-1037.

Rentals and Receptions

Rental of the lobby and theatre are available for various types of events. Rentals of costumes and props are also available. Call the Box Office at (410) 287-1037 for more information.

Volunteer Opportunities

Milburn Stone Theatre is always looking for volunteer ushers, actors, run crew, set-builders, and more. Call the Box Office at (410) 287-1037 for details.

The Milburn Stone Theatre at Cecil College is supported by a grant from the Maryland State Arts Council, an agency funded by the state of Maryland and the National Endowment for the Arts.

This program was funded in part with a grant from the Cecil County Arts Council, Inc., as provided by the Maryland State Arts Council.

**VIDEOTAPING & PHOTOGRAPHY IS
STRICTLY PROHIBITED**